



## Boutique Velvet (JF397)

A modern, vibrant, and soft to the touch polyester velvet, chosen for its exceptional hard-wearing properties and beautiful velvet feel.

Easy to care for, and fast becoming one of our most sought-after fabrics for upholstery and home interior projects.

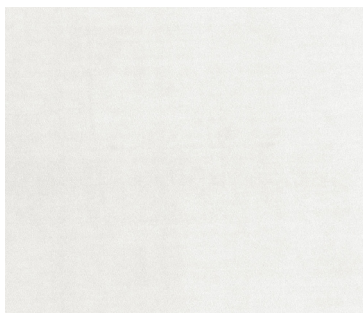
### Fabric Specifications

Composition:	100% Polyester
Width:	145-150 cms
Weight:	300 gsm
Pattern Repeat:	None / Plain Fabric
Martindale:	45,000
Care Instructions:	Machine Washable to 30°C
Flame Retardant:	FR By Request
Characteristics:	Water Resistant Stain Resistant
UV Resistant:	No
Origin:	China
HS Tariff Code:	5407613000

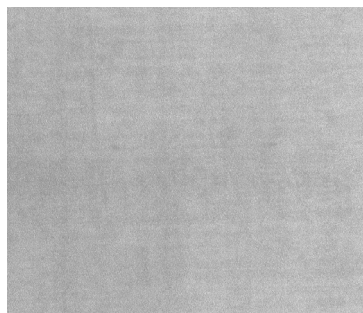
### Contact Details

+44 (0)161 624 4167  
info@ambassador-textiles.co.uk  
www.ambassador-textiles.co.uk

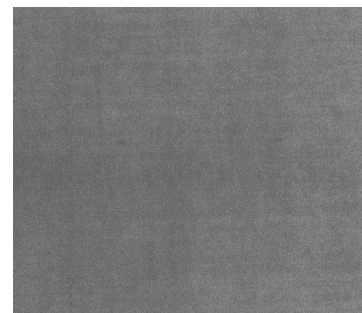
Ambassador Textiles Ltd, Unit A Vulcan Point, Vulcan Street,  
Oldham, Greater Manchester, OL1 4DR



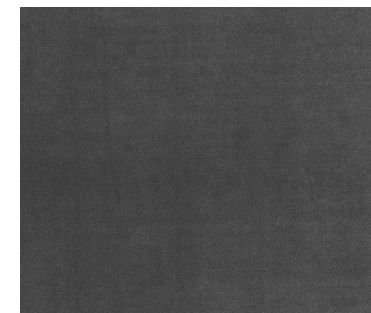
White



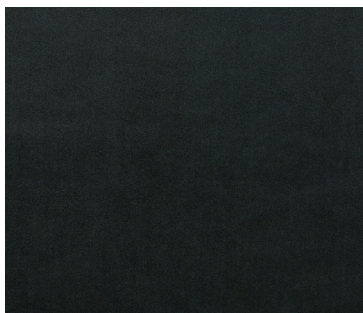
Glacier



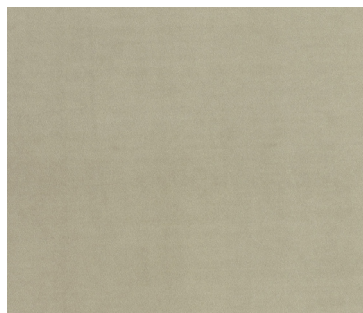
Silver



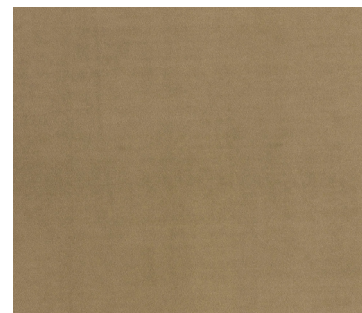
Shadow



Black



Linen



Mink



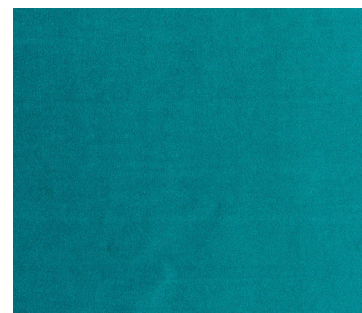
Platinum



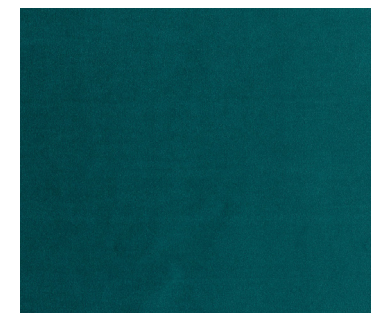
Stone



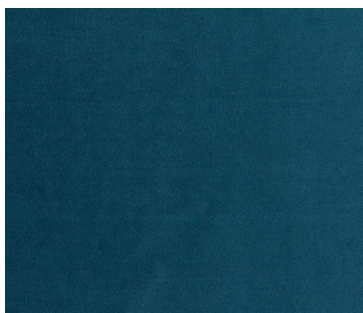
Chocolate



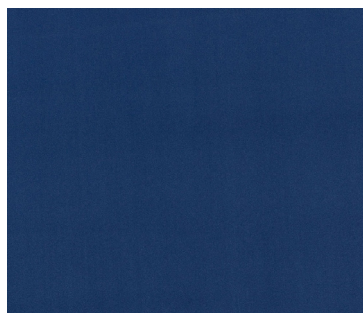
Aqua



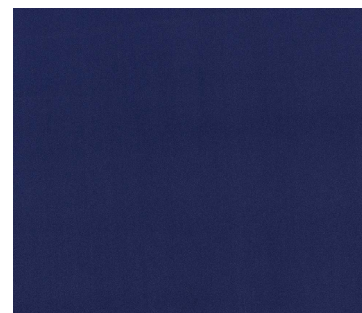
Teal



Pacific



Royal



Navy



Olive



## Boutique Velvet (JF397)

A modern, vibrant, and soft to the touch polyester velvet, chosen for its exceptional hard-wearing properties and beautiful velvet feel.

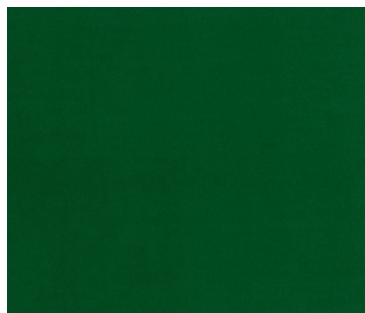
Easy to care for, and fast becoming one of our most sought-after fabrics for upholstery and home interior projects.

### Fabric Specifications

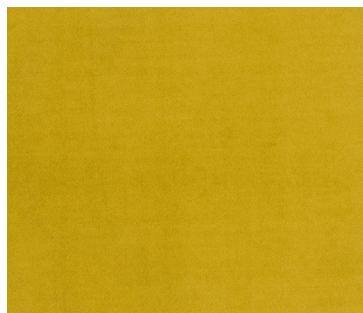
Composition:	100% Polyester
Width:	145-150 cms
Weight:	385 gsm
Pattern Repeat:	None / Plain Fabric
Martindale:	50,000
Care Instructions:	Machine Washable to 30°C Wipe Clean
Flame Retardant:	FR By Request
Characteristics:	Water Resistant Stain Resistant
UV Resistant:	No
Origin:	China
HS Tariff Code:	5407613000

### Contact Details

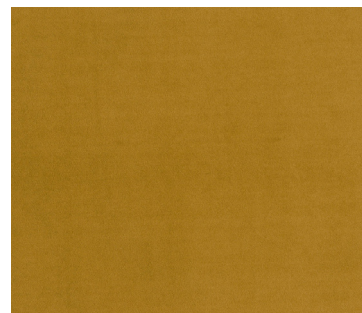
+44 (0)161 624 4167  
info@ambassador-textiles.co.uk  
www.ambassador-textiles.co.uk



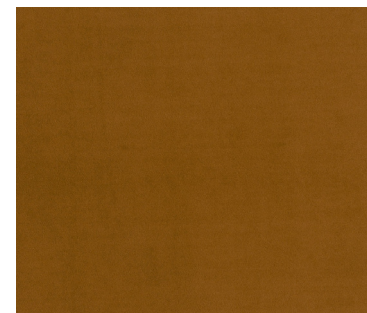
Emerald



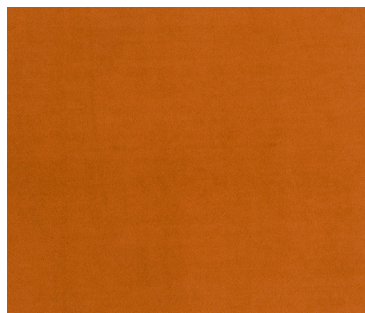
Lemon



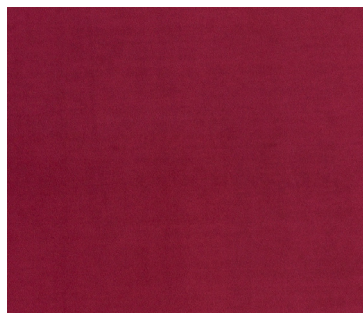
Mustard



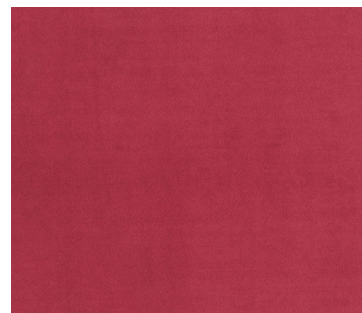
Saffron



Pumpkin



Cranberry



Boysenberry



Plum